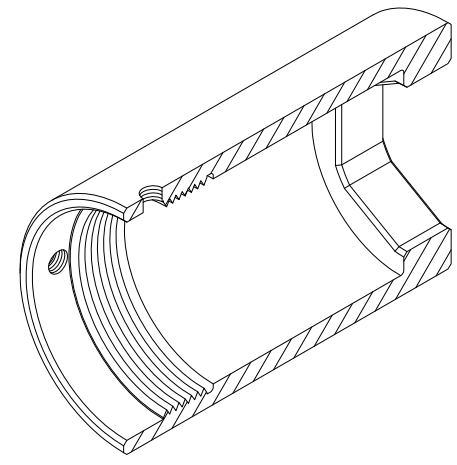


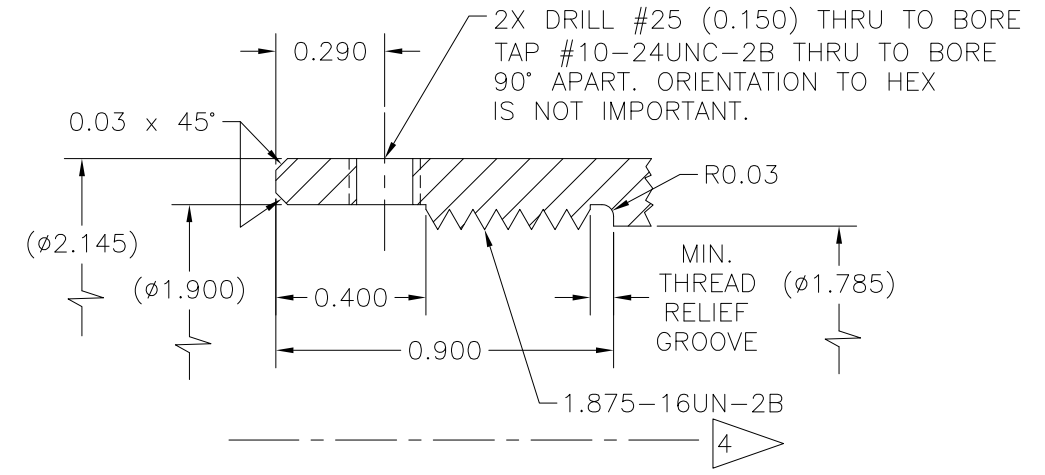
NOTES:

1. MATERIAL: BAR, 17-4PH/15-5PH, $\phi 2.145 \times 3.290$ LG.
2. HEAT TREAT: COMMERCIAL HT.
3. SURFACE TREATMENT: XYLAN COAT (O.D. & I.D.) OR EQ.
4. \triangle 1.875-16UN-2B
60° V-THREAD
INTERNAL CLASS 2B
MINOR DIA. = 1.807/1.821
5. WEIGHT: 1.11 LBS.

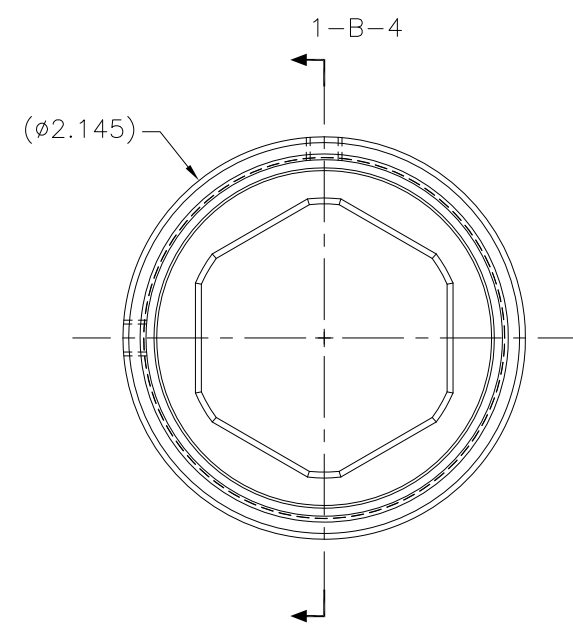
REVISIONS				
NO	DESCRIPTION	DATE	BY	APR/DATE
0	ISSUED FOR MANUFACTURE	05/12/10		



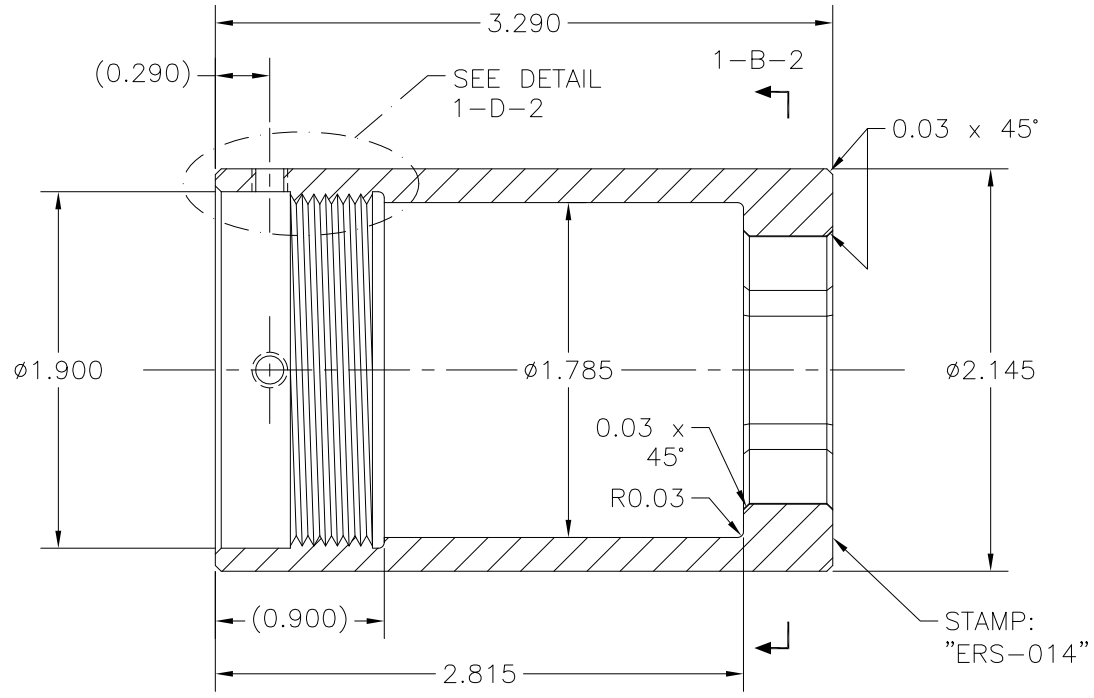
PICTORIAL 1-D-5
OUTER COUPLER
N.T.S.



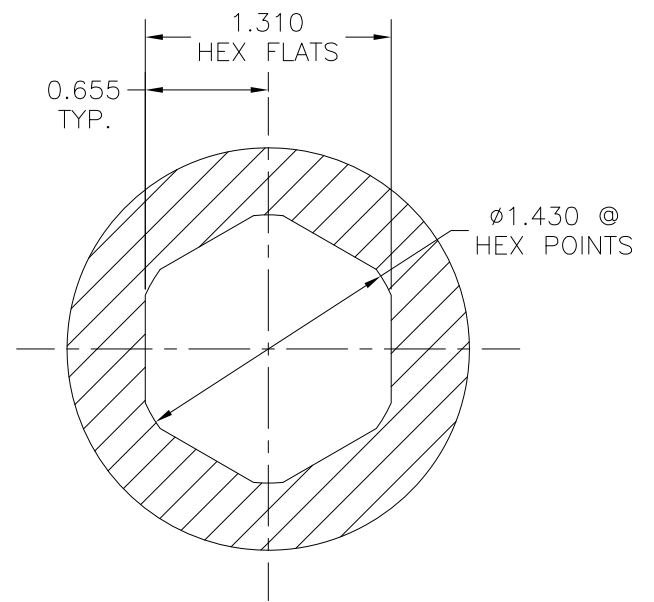
DETAIL 1-D-2
REF. 1-C-5



END VIEW 1-B-7
OUTER COUPLER



SECTION 1-B-4
REF. 1-C-7



SECTION 1-B-2
REF. 1-C-4

TOLERANCES: UNLESS OTHERWISE SPECIFIED 0.X \pm 0.030 0.XX \pm 0.010 0.XXX \pm 0.005 ANGLES \pm 1/2° BREAK EDGES 0.015 x 45° MIN. FINISH 125 [Symbol] 0.010A ALL DIMS ARE IN INCHES, UNLESS NOTED OTHERWISE.	PROPRIETARY NOTICE THIS DRAWING AND THE INFORMATION IT CONTAINS ARE CONSIDERED CONFIDENTIAL, AND MAY NOT BE REPRODUCED, COPIED OR USED, IN PART OR IN WHOLE, WITHOUT PRIOR WRITTEN CONSENT.	Integrated Ocean Drilling Program TEXAS A&M UNIVERSITY 1000 DISCOVERY DRIVE COLLEGE STATION, TX 77845	
		TITLE OUTER COUPLER	
SHEET 1 OF 1		ASSEMBLY 3" ERS	
SCALE 1:2		SYSTEM	
BY KM	DATE 04/01/10	APPROVED TP	CHECKED JCS
SIZE D		P/N ERS-014	REV. 0